

177°W

174°W

171°W

168°W

165°W

162°W

27°N

27°N

24°N

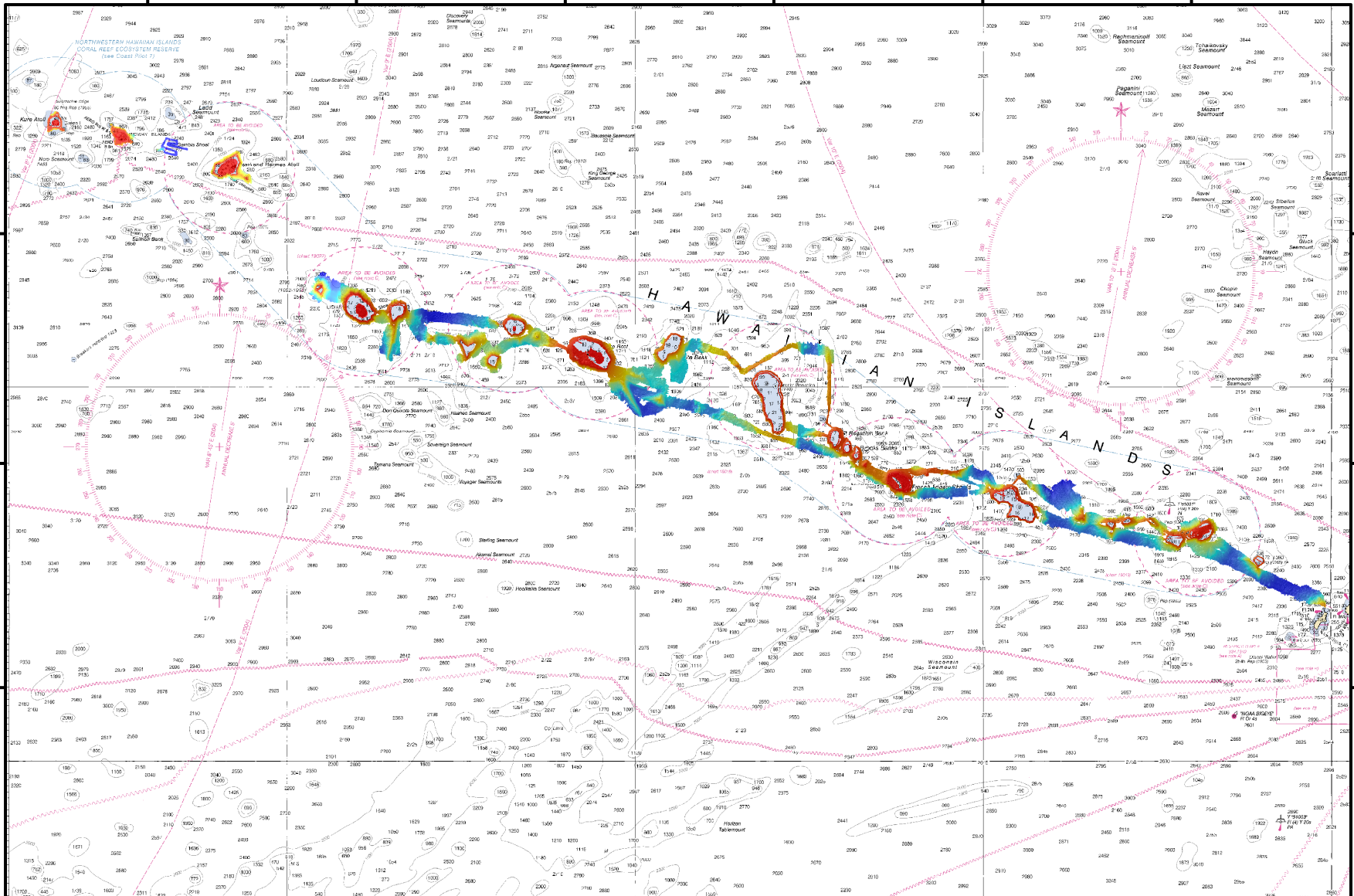
24°N

21°N

21°N

18°N

18°N



Northwestern Hawaiian Islands

Bathymetry



Not for navigation

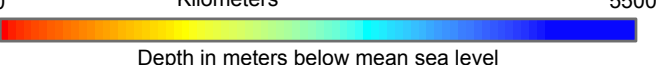
UNIVERSAL TRANSVERSE MERCATOR PROJECTION
BATHYMETRY GRIDDED AT 60 METERS



0 500
0 1,000
Nautical Miles

0 5500
Kilometers

nautical chart soundings in fathoms



Depth in meters below mean sea level

Bathymetry data includes R/V Kilo Moana, NOAA Ship Hialakai, and R/V AHI multibeam bathymetry, and Ikonos derived depths.

Surveyed By:
National Oceanographic and Atmospheric Agency
Pacific Islands Fisheries Science Center
Coral Reef Ecosystem Division
1125B Ala Moana Blvd
Honolulu, Hawaii 96814 USA
tel 808.592.7025 fax 808.592.7013