

145°30'E

145°35'E

145°40'E

145°45'E

BPI Zones

- Crests
- Depressions
- Flats
- Slopes



15°5'N

15°5'N

15°N

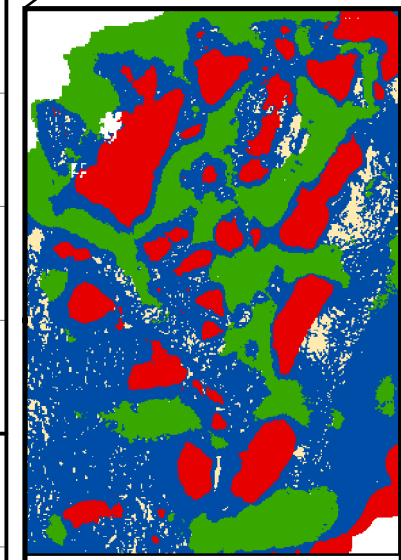
15°N

14°55'N

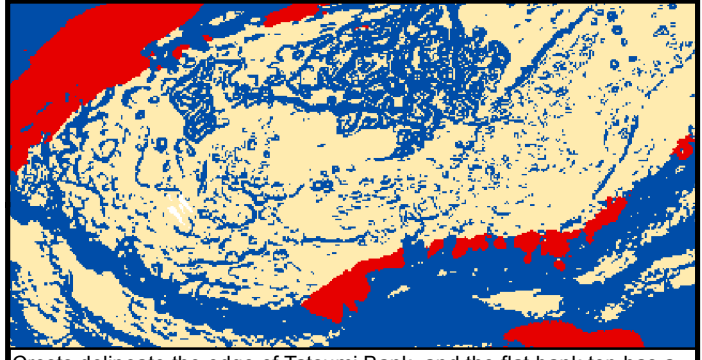
14°55'N

14°50'N

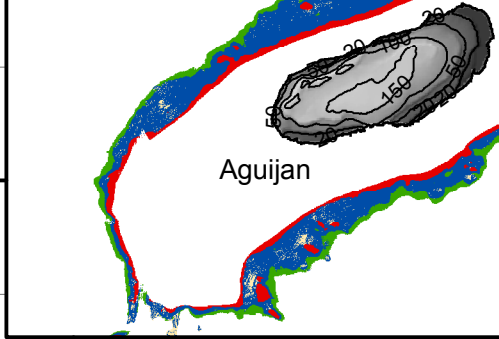
14°50'N



Interconnected crests and depressions may be important habitat for ahermatypic corals, bottomfish, or other organisms.



Crests delineate the edge of Tatsumi Bank, and the flat bank top has a network of small escarpments highlighting potentially high biodiversity.



Aguijan

Tinian

Tatsumi Bank

145°30'E

145°35'E

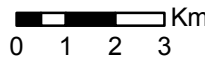
145°40'E

145°45'E

Tinian and Aguijan Islands, and Tatsumi Bank BPI Zones

5-m grid cell size
 NOAA PIFSC Coral Reef Ecosystem Division Pacific Islands Benthic Habitat Mapping Center
NOT FOR NAVIGATION

UTM, Zone 55N, WGS84



Bathymetric Position Index (BPI) Zones are derived from a focal mean analysis on bathymetry and slope. The BPI scalefactor 250 is used, based on measurements of key reef features evident in the bathymetry and hillshade. Two ranges of slope define flats and slopes: $x < 5$ and $x > 5$ respectively. Grayscale elevation data, in meters, are courtesy of the USGS. See metadata for more information.

