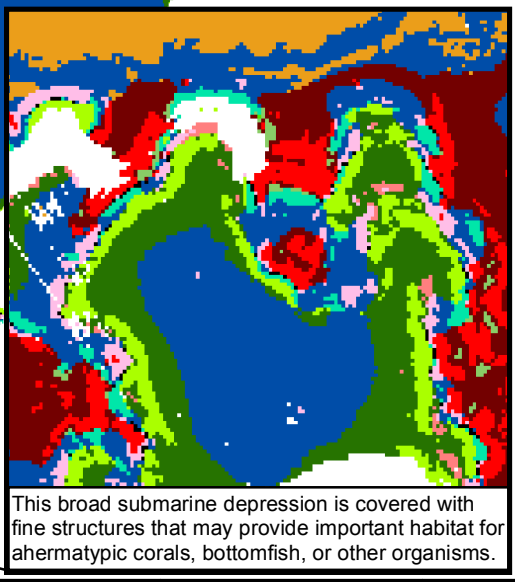
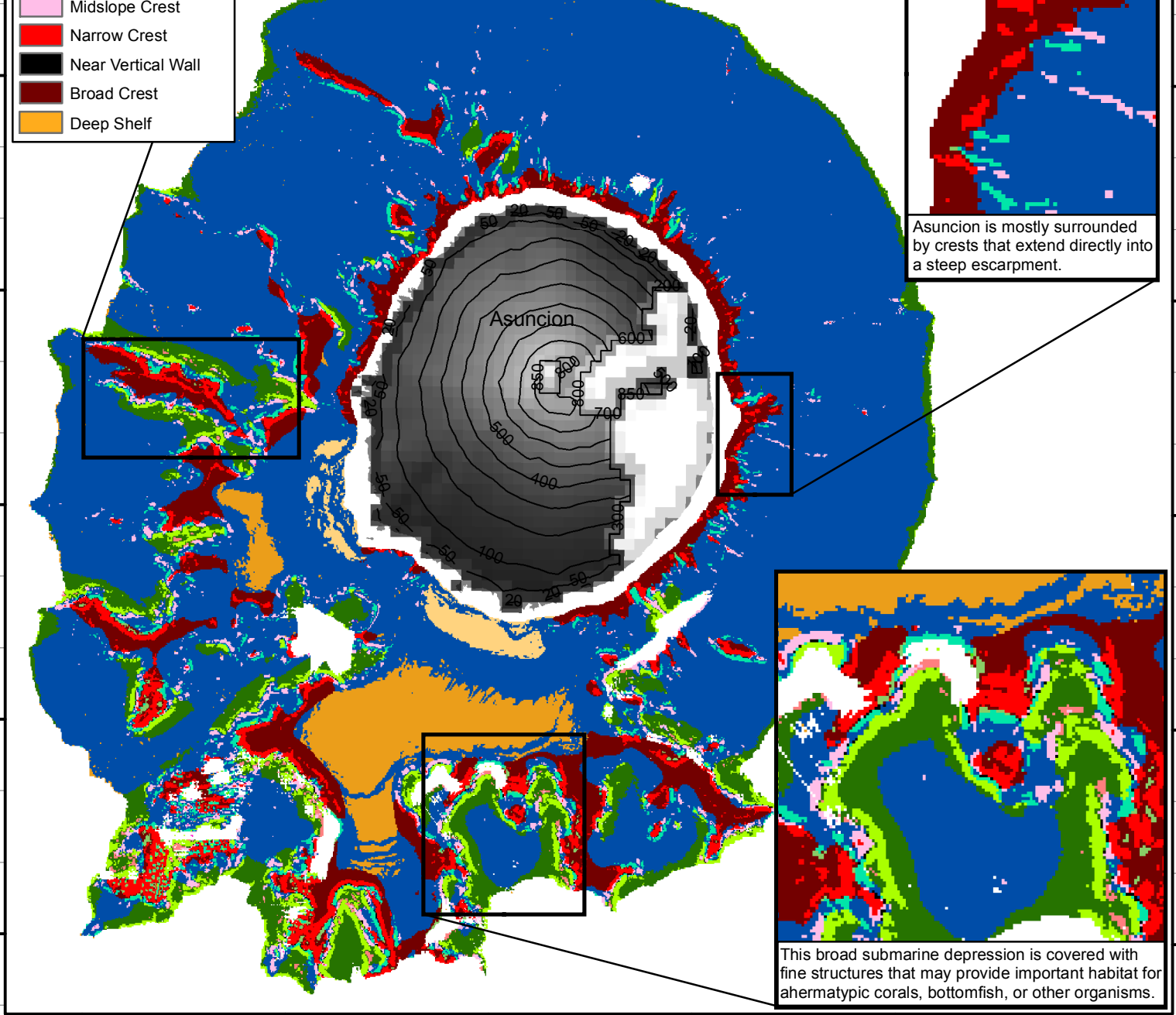
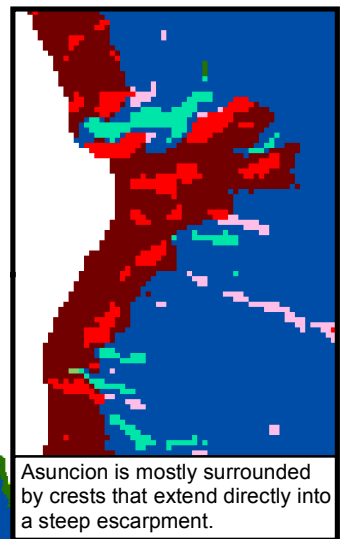
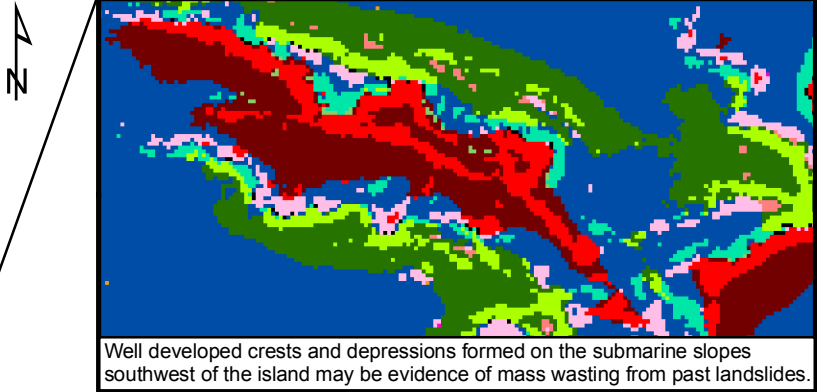


145°22'E 145°23'E 145°24'E 145°25'E 145°26'E 145°27'E

19°44'N 19°43'N 19°42'N 19°41'N 19°40'N 19°39'N

- BPI Structures**
- Narrow Depression
  - Depression on Flat
  - Midslope Depression
  - Depression on Crest
  - Open Depression
  - Shelf
  - Escarpment
  - Crest in Depression
  - Crest on Flat
  - Midslope Crest
  - Narrow Crest
  - Near Vertical Wall
  - Broad Crest
  - Deep Shelf



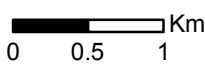
145°22'E 145°23'E 145°24'E 145°25'E 145°26'E 145°27'E

**Asuncion Island BPI Structures**  
10-m grid cell size

NOAA PIFSC Coral Reef Ecosystem  
Divison, Pacific Islands Benthic  
Habitat Mapping Center

**NOT FOR NAVIGATION**

UTM, Zone 55N,  
WGS84



Asuncion Island Bathymetric Position Index (BPI) Structures are derived from two scales (50 and 250) of a focal mean analysis on bathymetry and slope to predict reef structures. Shelves are defined here as those at depths above -60m. Asuncion's deep shelf (below -60m) lies southwest of the island. Grayscale elevation data, in meters, are courtesy of USGS. See metadata for more information.

