

145°30'E

145°33'E

145°36'E

145°39'E

145°42'E

145°45'E

15°6'N

15°6'N

15°3'N

15°3'N

15°N

15°N

14°57'N

14°57'N

14°54'N

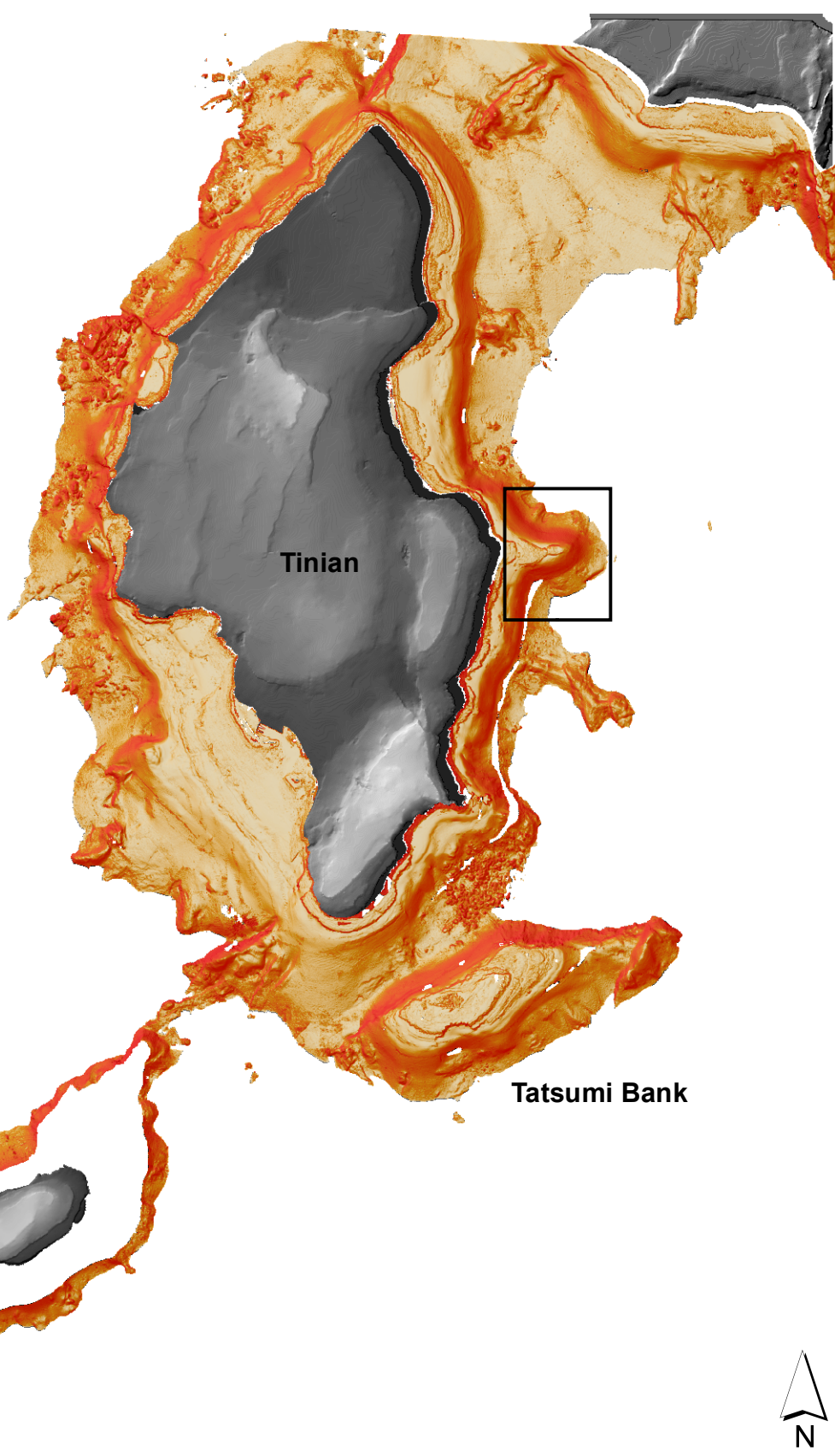
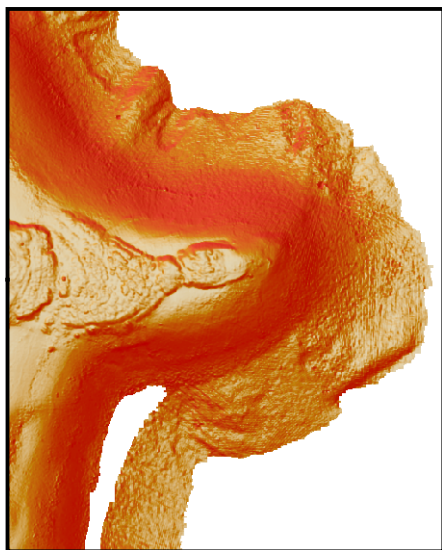
14°54'N

14°51'N

14°51'N

14°48'N

14°48'N



Tinian

Aguijan

Tatsumi Bank



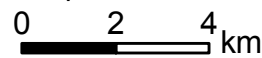
**Tinian and Aguijan Islands, and Tatsumi Bank Rugosity**

NOAA Coral Reef Ecosystem Division

Derived from multibeam bathymetry collected aboard NOAA Ship Hi'ialakai, NOAA R/V AHI, and US Naval Ship Sumner; lidar collected by Naval Oceanographic Office, and derived bathymetry from IKONOS image by Space Imaging. USGS DEM also shown. 5-m grid cell size

**NOT FOR NAVIGATION**

UTM Projection 55N  
Ellipsoid WGS84



RUGOSITY

