

145°36'E

145°38'E

15°N

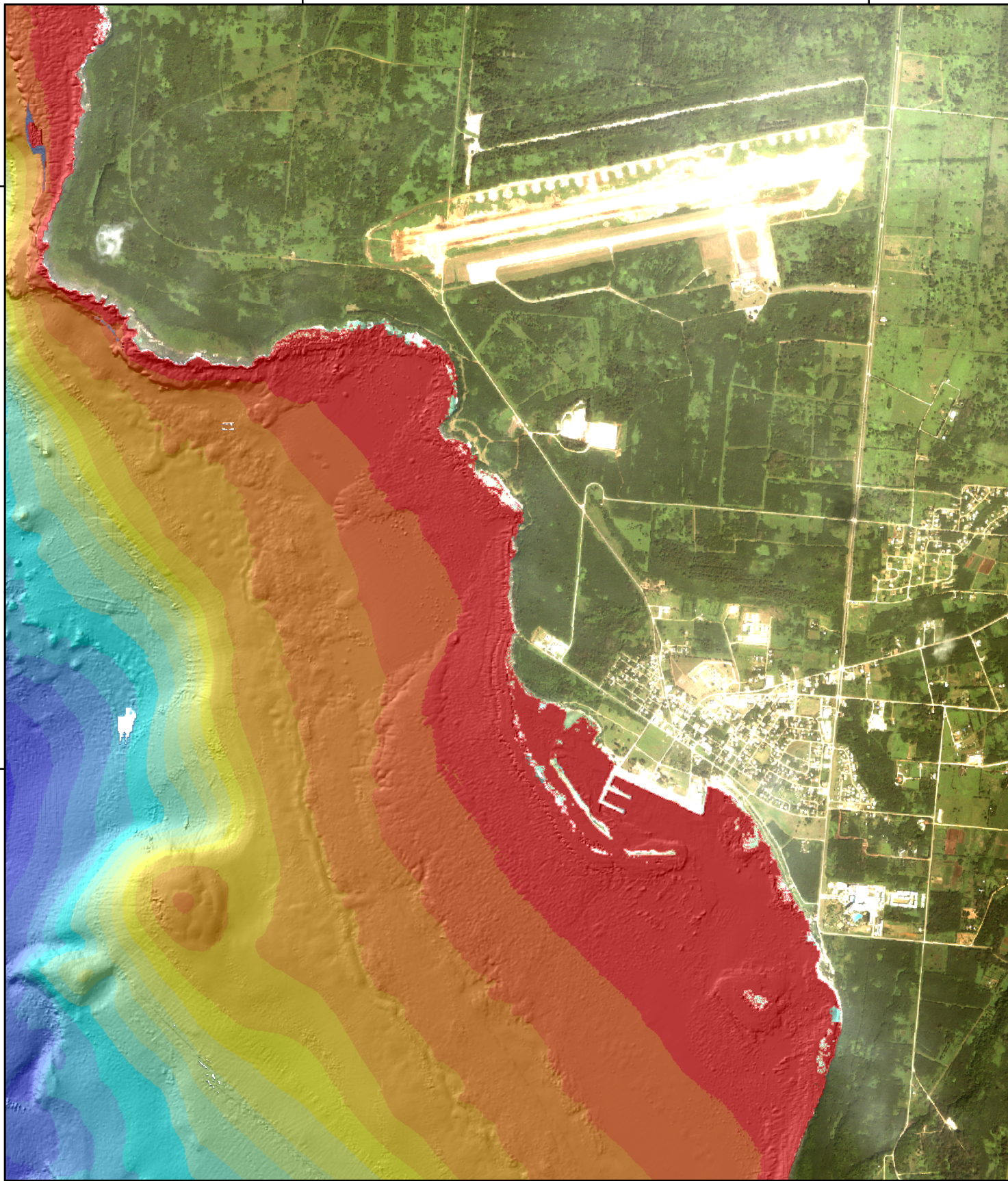
15°N

14°58'N

14°58'N

145°36'E

145°38'E

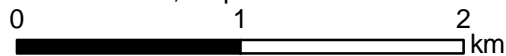


Tinian Island Multibeam Bathymetry and IKONOS Derived Depths

5 m grid cell size

Data include NOAA Ship Hi'iialakai and R/V AHI multi-beam bathymetry, IKONOS image by Space Imaging. Satellite Image from USGS DOQQ. LIDAR from SHOALS-400m algorithm. **NOT FOR NAVIGATION**

Universal Transverse Mercator Projection,
Zone 55N, Ellipsoid: WGS84



1

Bathymetry

