

145°36'E

145°38'E

15°N

15°N

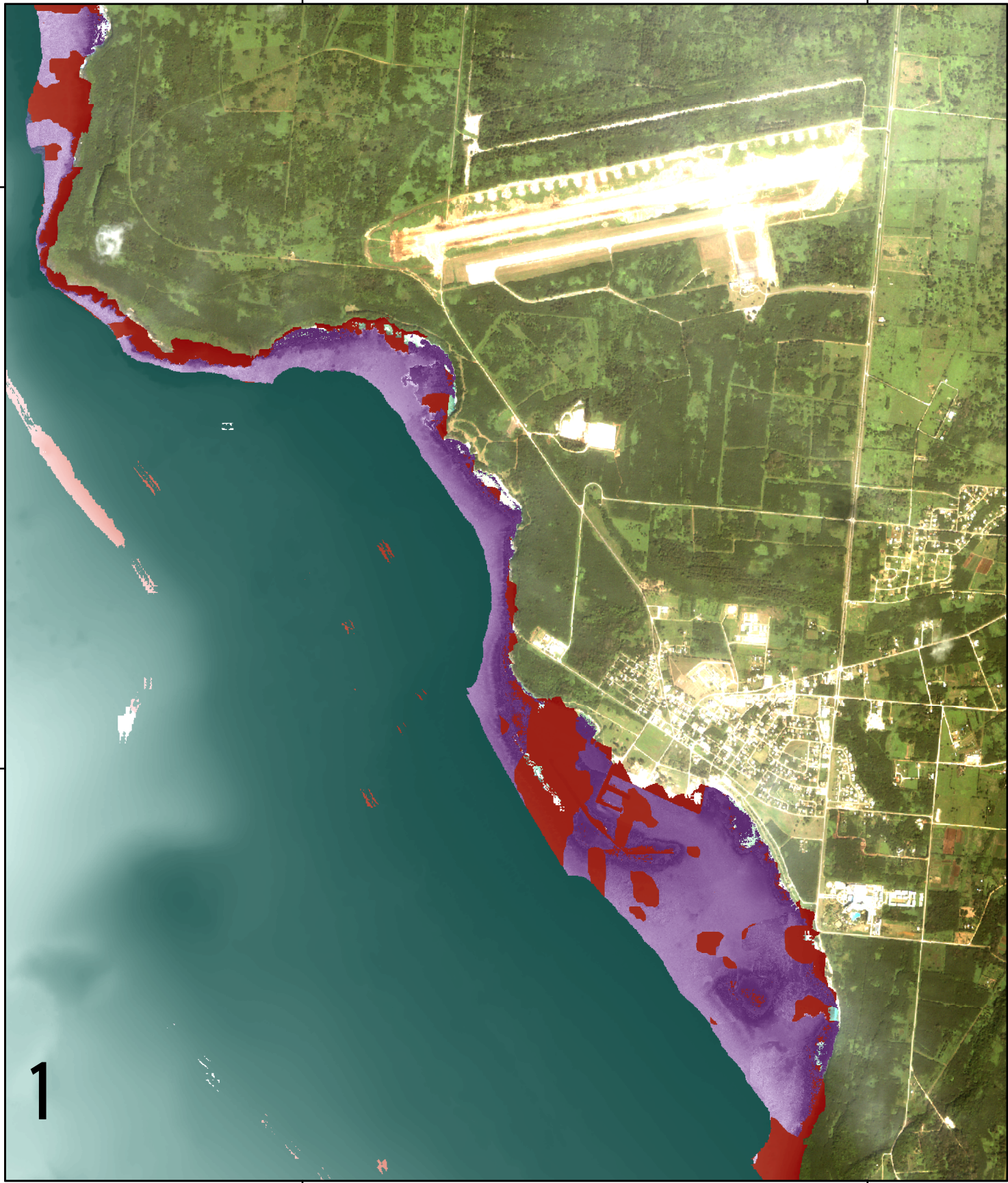
14°58'N

14°58'N

145°36'E

145°38'E




1



**Tinian Island Multibeam Bathymetry and IKONOS Derived Depths**  
 coverage map  
 Data include NOAA Ship Hi'iialakai and R/V AHI multi-beam bathymetry, IKONOS image by Space Imaging. Satellite image form USGS DOQQ. LIDAR from SHOALS-400 algorithm **NOT FOR NAVIGATION**

Universal Transverse  
 Mercator Projection, Zone 55N,  
 Ellipsoid: WGS84

0 0.5 1 km

 IKONOS  
 Multibeam  
 LIDAR

