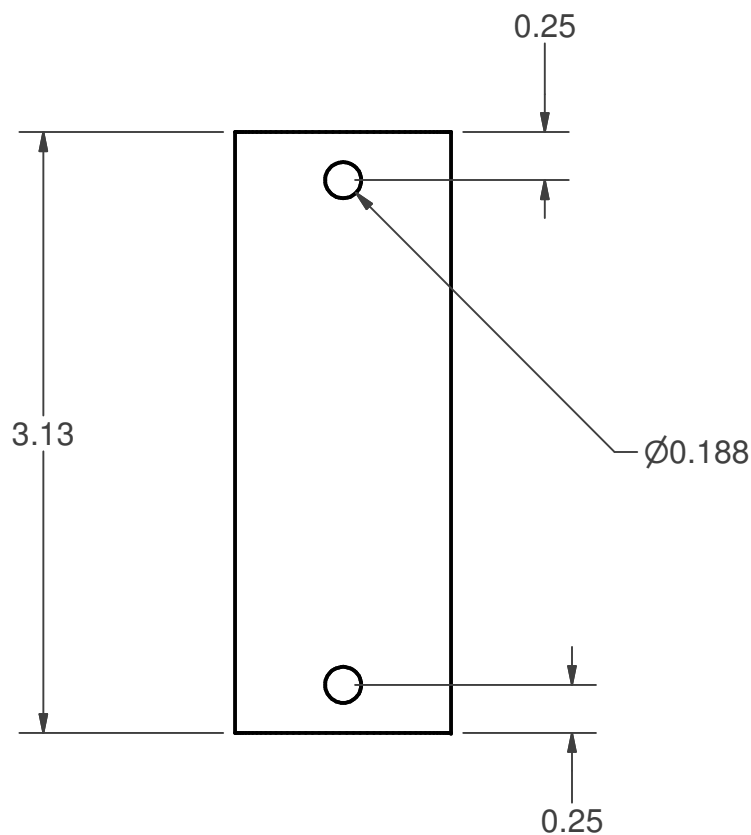
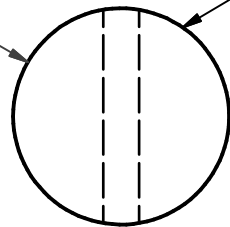


Ø1.125

SLIDING FIT TO CHEEK PLATES



NOTES:
 1) MATERIAL IS GR2 TI
 2) BREAK ALL EDGES 1/16 APPROX
 3) MAKE 4

TOLERANCES: (UNLESS SPECIFIED OTHERWISE) .X = ± .030 .XX = ± .010 .XXX = ± .005 A/B = ± .0625 X' = ± 1'	DRAWN Dave Copson	12/14/2005	University of Hawaii-SOEST		
	CHECKED		TITLE		
	MFG		ALOHA PROOF MODULE SHACKLE PIN		
	APPROVED DC		SIZE B	DWG NO shacklepin	REV 0
			SCALE		SHEET 1 OF 1