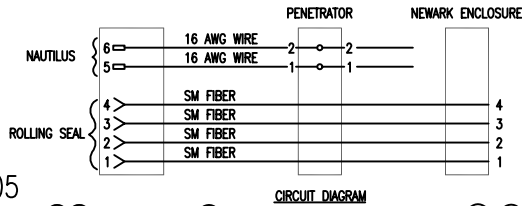


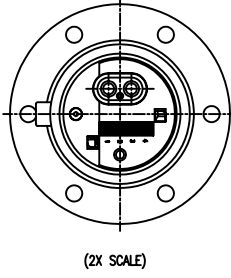
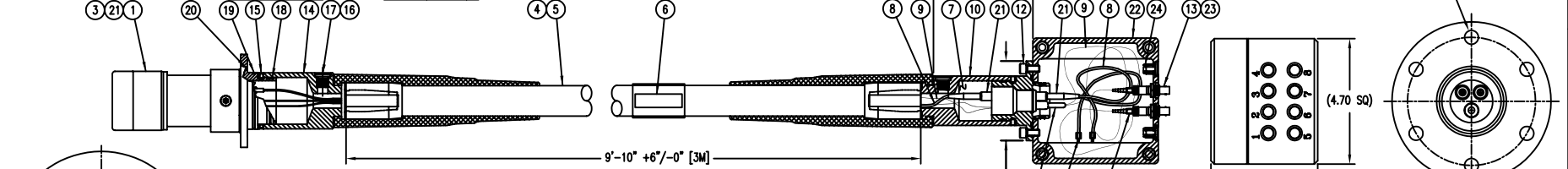
NOTES:

- DO NOT SCALE FROM DRAWING.
  - FOR ITEM 1 OUTLINE/INTERFACE DIMENSIONS SEE DRAWING 18044 (FAK-064-03)
- ▲ FIBERS & WIRE PIGTAIL LENGTH TO BE 6'-7" +6"/-0 [2M]

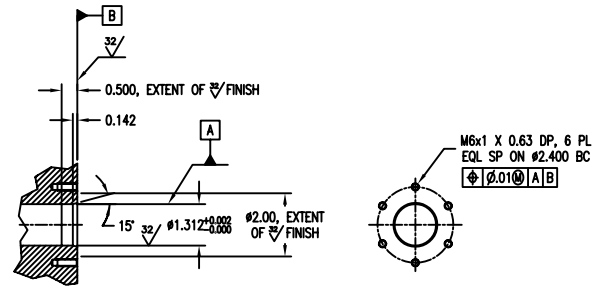
UNCONTROLLED COPY  
 COPY FOR INFORMATION ONLY  
 WILL NOT BE KEPT UP TO DATE  
 APPROVAL TO ISSUE LME DATE 12/29/05



REVISION	DESCRIPTION	DATE	APPROVED
A	CO 11088 INITIAL ISSUE	12-29-05	WDP



26	1013497	RNF-100 X 1/4"	CLEAR HEATSHRINK	B.O.F.	4 X A/R
25	1013495	RNF-100 X 1/8"	CLEAR HEATSHRINK	B.O.F.	2 X A/R
24	1031560	207-241141-00	CAP HOLE PLUG	B.O.F.	4
23	1014457	SLP-18212510	SEIKO, ST CONNECTOR	B.O.F.	4
22	1040136	FIB-204-04-13	NEWARK ENCLOSURE	ALUMINUM	1
21	1040137	ODN-371-01	BOOT SEAL S/A	VARIOUS	6
20	1000386	2-036-N674-70	PARKER O-RING	NITRILE RUBBER	1
19	1000378	2-033-N674-70	PARKER O-RING	NITRILE RUBBER	1
18	1000371	2-030-N674-70	PARKER O-RING	NITRILE RUBBER	2
17	1000645	3-904-N552-90	PARKER O-RING	NITRILE RUBBER	1
16	1013597	ROV-016-04-2	1/4" FILL/VENT PLUG	TITANIUM, COMM. PURE GR. 2	1
15	1001149	8-32 UNC X 3/16	SOCKET HEAD SET SCREW	TITANIUM, COMM. PURE GR. 2	8
14	1013901	ROV-129-04	-12 INTEGRAL TERM SHELL	TITANIUM, COMM. PURE GR. 2	1
13	1006220	F18102V	ST COUPLER	B.O.F.	4
12	1000145	1/4-20 UNC X 1/2	SOCKET HEAD CAP SCREW	TITANIUM, COMM. PURE GR. 2	4
11	1000679	44-105	IDENT LABEL "1" THRU "6"	B.O.F.	6
10	1040480	NRH-091-01	HYBRID BULKHEAD PENETRATOR	VARIOUS (TITANIUM)	1
9	1000061	001E41-31131-24	SMF 8.3/125/900, WHITE	B.O.F.	4 X A/R
8	1032375	178-5626	HIGH VOLTAGE 16 AWG WIRE	B.O.F.	4 X A/R
7	1004367	DC200/100CS	DOW CORNING SILICONE OIL	B.O.F.	A/R
6	1013374	P-TOUCH-1/2"	LABEL "ODI S/N _____"	B.O.F.	A/R
5	1012416	ODHOSE-12-HBD-2	-12 HYDRAULIC HOSE	B.O.F.	1 X A/R
4	1012533	ODN-109-01-2	TTI, -12 HOSE ASSEMBLY	VARIOUS	1
3	1007333	FIB-078-01	RECEPTACLE OPTICAL STEM ASSEMBLY	VARIOUS	4
2	1012423	ODN-001-04-1	BOOT SEAL	OD1037 RUBBER	1
1	1016683	NRH-034-01-1	ROV NRH BULKHEAD PLUG	VARIOUS (TITANIUM)	1
ITEM	PART #	REF #	DESCRIPTION	MATERIAL	QTY



ALL DATA AND INFORMATION CONTAINED OR DISCLOSED BY THIS DOCUMENT IS CONFIDENTIAL AND PROPRIETARY INFORMATION OF OCEAN DESIGN, INC. AND ALL RIGHTS THEREIN ARE EXPRESSLY RESERVED. BY ACCEPTING THIS MATERIAL THE RECIPIENT AGREES THAT THE MATERIAL AND THE INFORMATION CONTAINED THEREIN IS HELD IN CONFIDENCE AND IN TRUST AND WILL NOT BE USED, COPIED, REPRODUCED IN WHOLE OR IN PART, NOR ITS CONTENTS REVEALED IN ANY MANNER TO OTHERS, EXCEPT TO MEET THE SPECIFIC PURPOSE FOR WHICH IT WAS DELIVERED.

UNLESS OTHERWISE SPECIFIED DIMENSIONS ARE IN INCHES. TOLERANCES AND ANGLES  $\pm$  1/2° FRACTIONS DECIMALS  $\pm$  1/64  $\pm$  .X = .05  $\pm$  .2X = .01  $\pm$  .30X = .003 CONCENTRICITY .004 TIR SURFACE FINISH  $\nabla$  BREAK ALL UNMATED CORNERS & RISE INTERNAL CORNERS R OR MAX THIRD ANGLE PROJECTION

**ODI** advanced technology systems **OCEAN design, inc.**  
 www.odi.com

APPROVALS DATE: NRH BLKHD PLUG TO BLKHD PNTR GA DRAWING W/ PARTS LIST

DRAWN: MWL  
 CHECKED: MF  
 ENGR: WDP  
 DESIGN: WDP

SIZE: B CASE CODE: DVVS8 DOC. NO.: 92668 REV: A  
 SCALE: HALF PART NO.: 1039635 SHEET 1 OF 1  
 REF. NO.: NRH-085-01